



Stampa circolare con testo illeggibile e una firma.

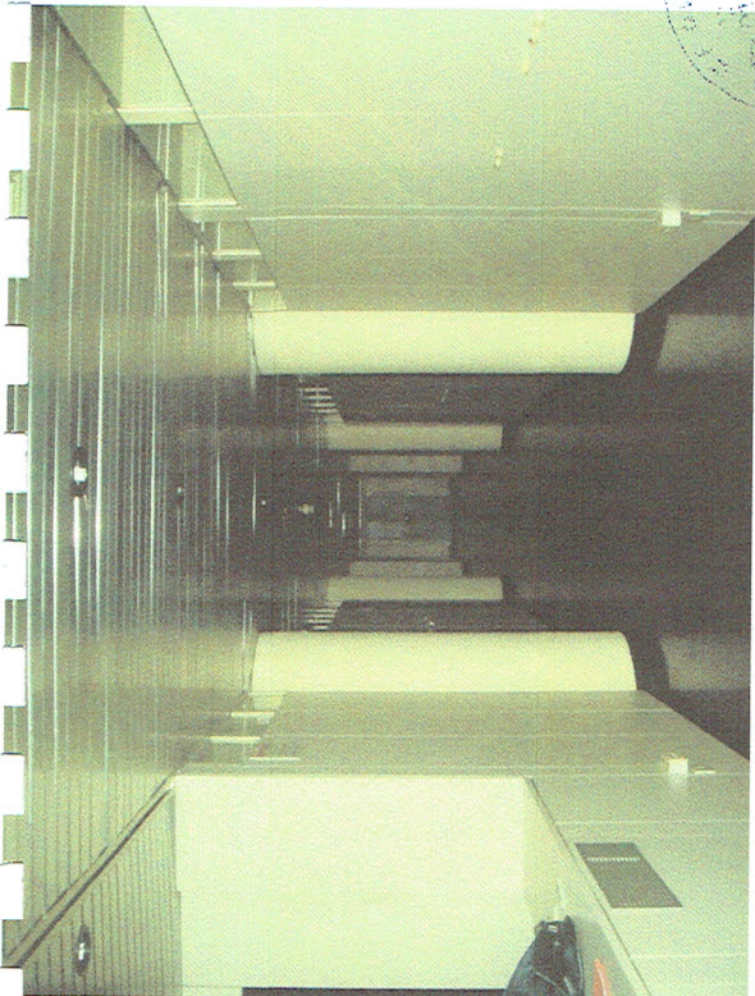
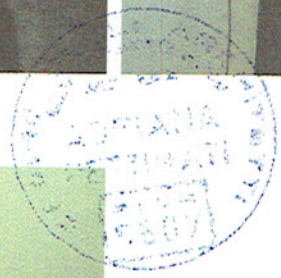




UFFICIO 1 (01)



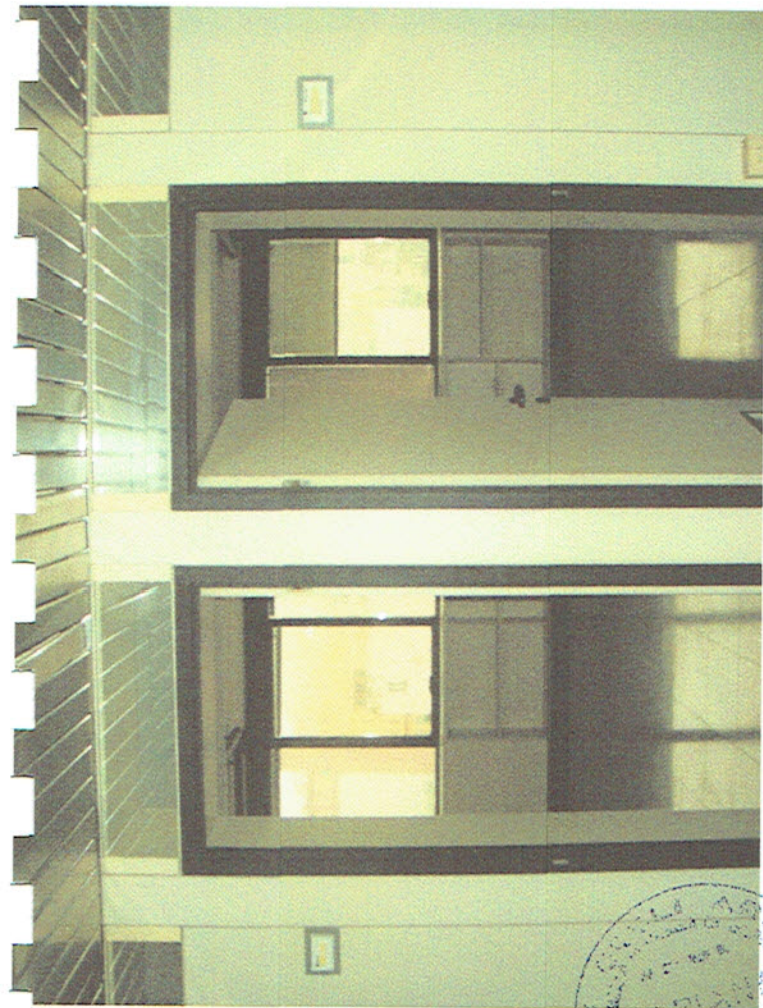
UFFICIO 3 (03)



INGRESSO (01)



UFFICIO (02)



UFFICIO 5 E 6



UFFICIO 6 (UG)



UFFICIO 4 (VA)



UFFICIO 5 (UR)



BAGUN (WC)



R'POSTIGAN (R1)



URUS L10 (U8)



URUS L10 7



OFFICE 08



OFFICE (UP)



रिपोस्टिंग (R)



BAGM (WC)



UFFICIO 011



UFFICIO 010



UFFICIO 012