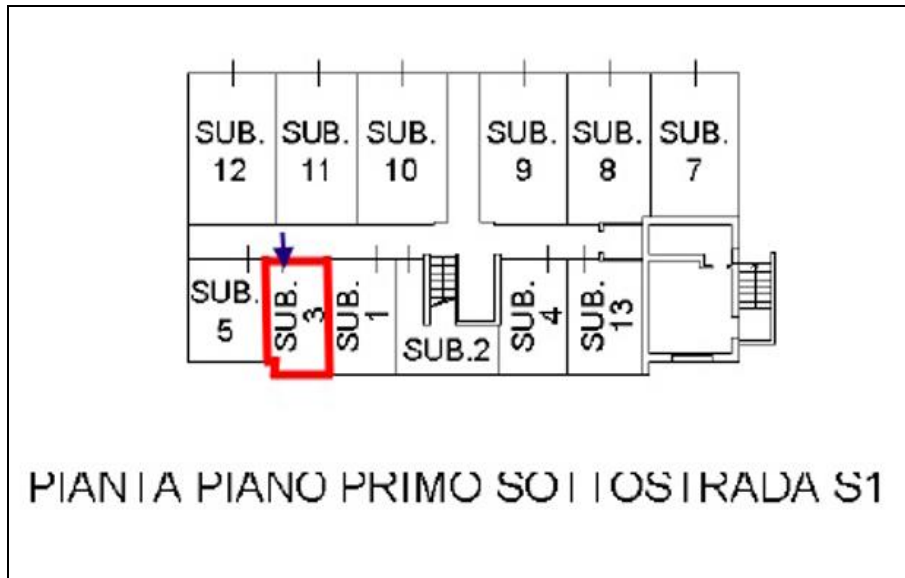


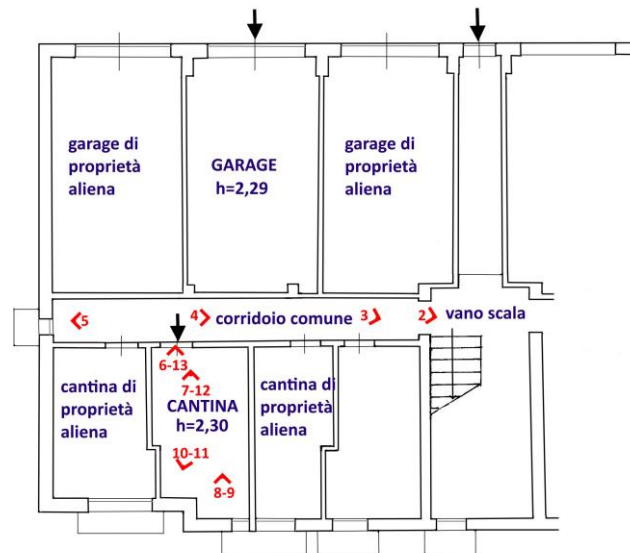
DOCUMENTAZIONE FOTOGRAFICA DELLA CANTINA

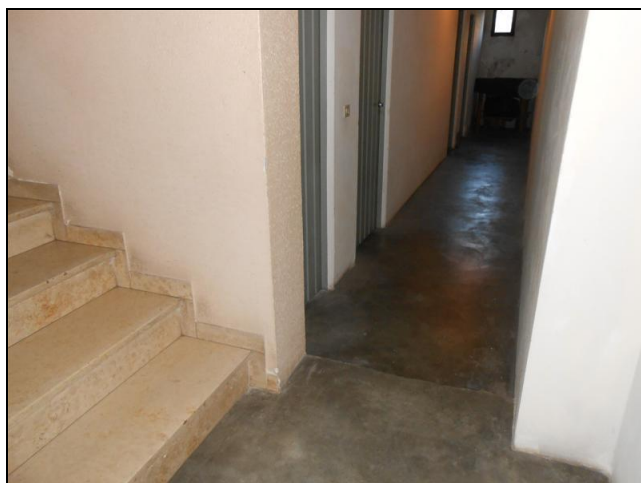
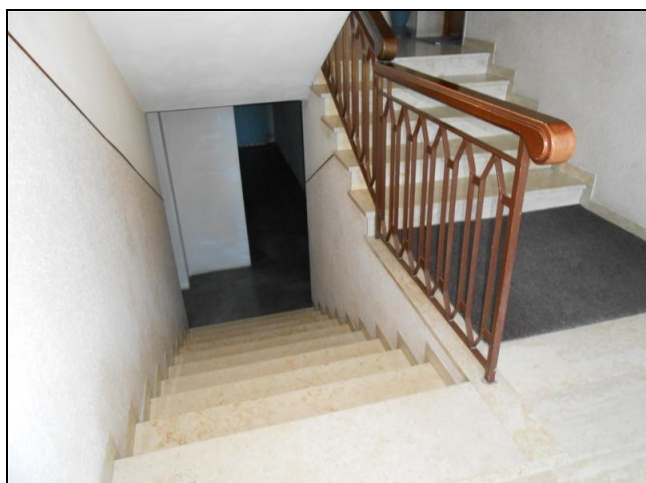
sita al piano seminterrato con accesso da corridoio comune
annessa all'abitazione censita al fl. 11, p.la 926 sub. 3



PIANO SEMINTERRATO: CANTINA

scoperto comune spazio di manovra





1) 2) Accesso al seminterrato dal vano scala condominiale



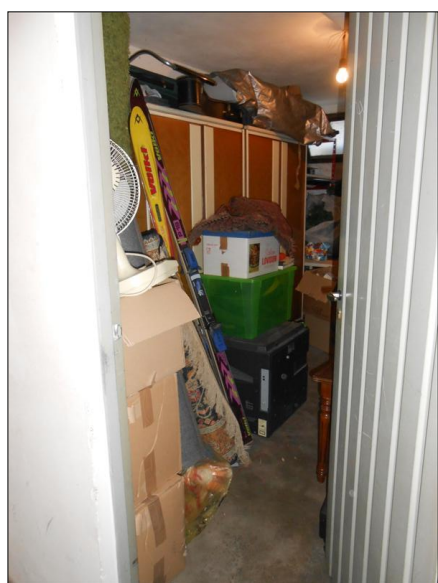
3) Corridoio comune



4)



5)



6) Cantina



7)



8) Cantina



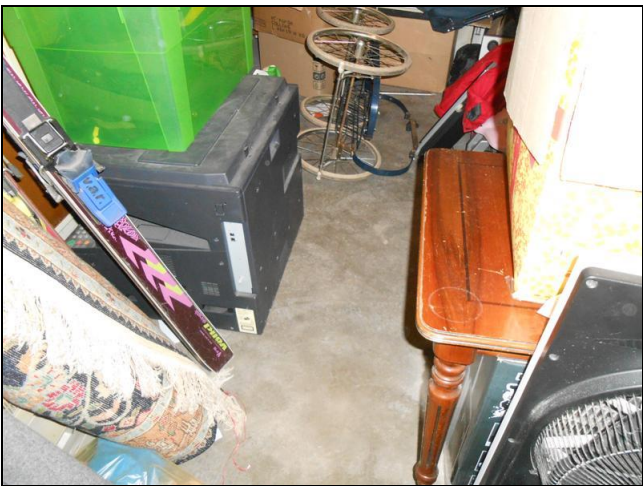
9)



10)



11)



12)



13)