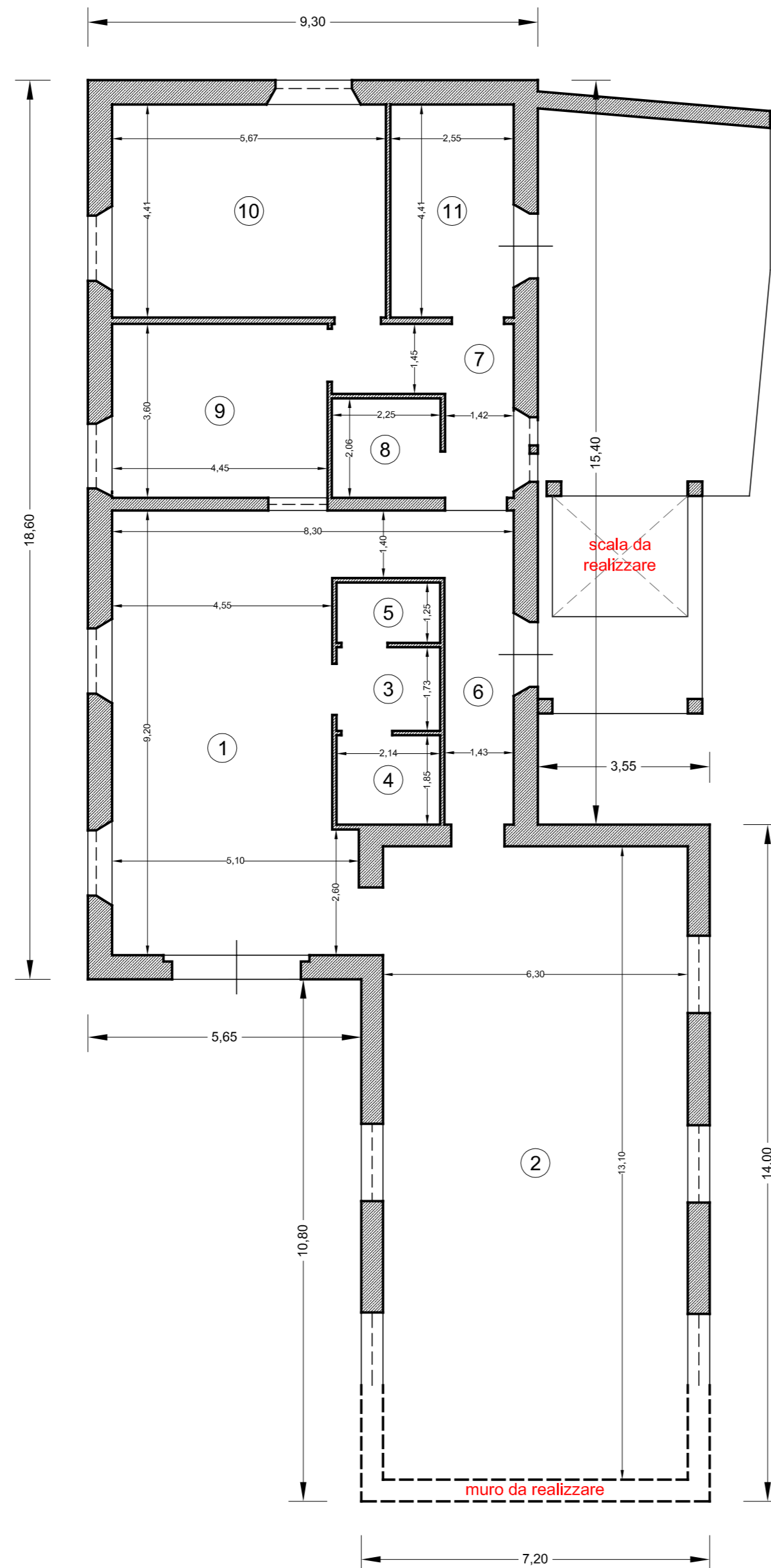
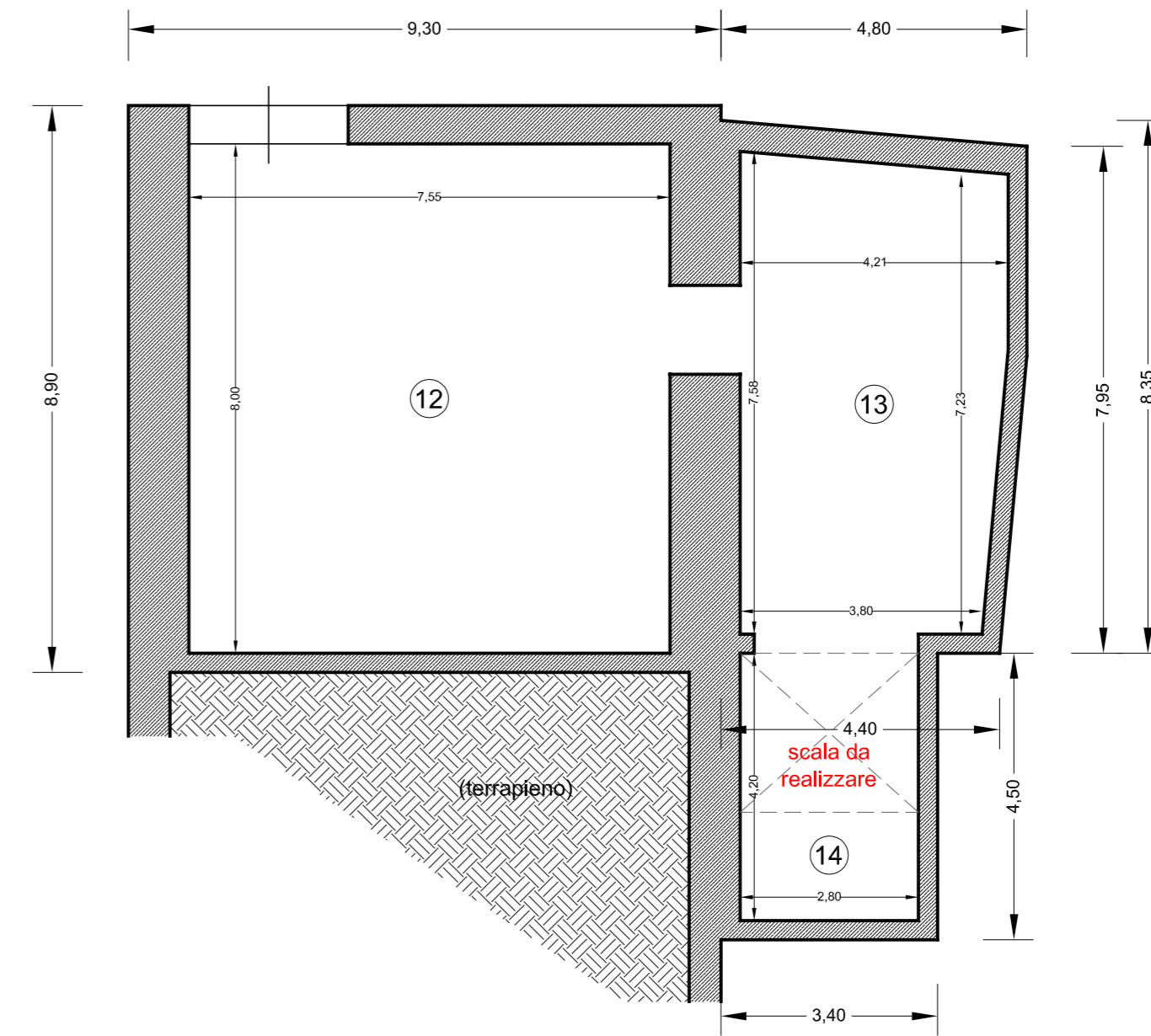


PIANTA
PIANO TERRA



PIANTA
PIANO SEMINTERRATO



SUPERFICIE "reale" LORDA	
PIANO TERRA (locali principali e accessori diretti)	
$[(9,30 \times 15,40) + (5,65 \times 3,20) + (7,20 \times 14,00)] = \text{mq. } 261,94$	mq. 262,00
PIANO SEMINTERRATO (accessori diretti)	
$[(9,30 \times 8,90) + (\text{media } 4,60 \times \text{media } 8,15) + (3,40 \times 4,50)] = \text{mq. } 135,56$	mq. 136,00
Totale	mq. 398,00

SUPERFICIE NETTA	
locale 1	mq. 46,54
locale 2	mq. 82,53
locale 3	mq. 3,70
locale 4	mq. 3,96
locale 5	mq. 2,68
locale 6	mq. 9,28
locale 7	mq. 8,50
locale 8	mq. 4,63
locale 9	mq. 16,02
locale 10	mq. 25,00
locale 11	mq. 11,25
locale 12	mq. 60,40
locale 13	mq. 30,25
locale 14	mq. 11,76
Totale	mq. 316,50